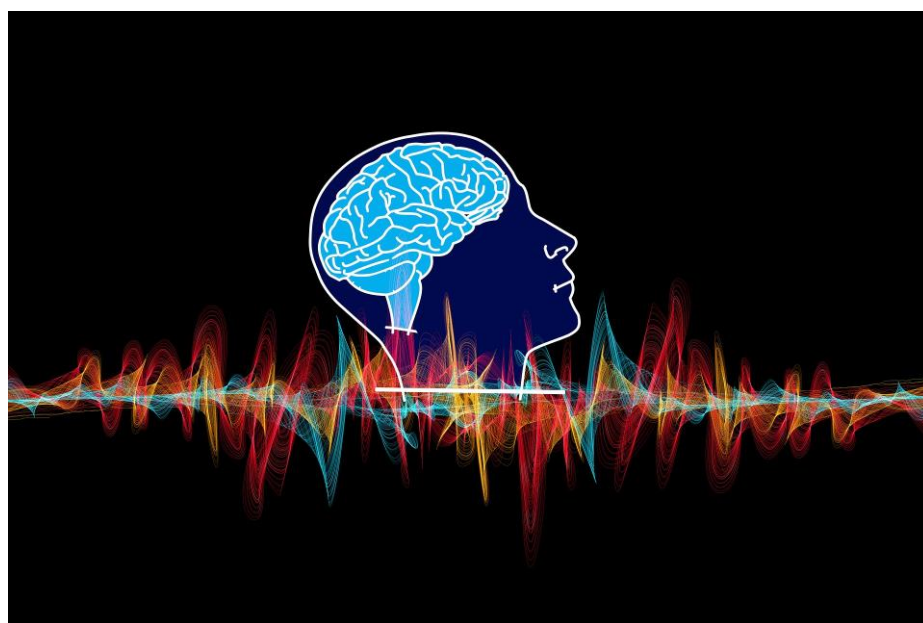


## PRESS RELEASE

---

### **“I predict your words”: that is how we understand what others say to us**

**Making predictions could be a key function of our brain to help us understand what is said to us quickly and efficiently, especially in noisy and complex contexts. These are some of the conclusions of a new study conducted at SISSA in Trieste, and published in eNeuro**



14 October 2019

We are at a fun but noisy party: how can we understand the words someone is saying to us despite the background music and voices? Thanks to the hard work of our brain and a special trick, it is capable of using: “predicting” the word that are said. Based on the first sounds that arrive at it directly, the brain makes a prediction, “suggesting” a solution. To say so is a new study by SISSA, in association with the universities of Liverpool and Cambridge, just published in the journal eNeuro. Thanks to an elegant series of experiments which involved the analysis of the electroencephalogram of a group of volunteers listening to precise groups of syllables, the study has shown how our auditory system, and the brain in particular, has a phenomenal ability to help us listen and understand in complicated, uncertain and noisy situations. Far from being a simple processor of stimuli, our brain seems to have a decisively proactive role, anticipating the

possible word, and detecting readily any error in the prediction. The study is a further step in supporting a central idea in the cognitive neurosciences of recent decades that sees the brain as a proper “predictive machine”.

### **Listening to unknown words: This is how the experiment was done**

In the study, the scholars subjected a group of volunteers to different tests based on repeatedly listening to meaningless three-syllable words. Now and then, however, a specific syllable, the second or third, was changed. In these tests, the scholars then analyzed the brain waves of the subjects using electroencephalography and verified their pattern. When the repeated word was one they had already heard many times, the waves followed a precise pattern. When, instead, a variation occurred in the second syllable, a precise signal, called Mismatch Negativity or MMN, appeared in the brain waves, which is recorded when a prediction is not fulfilled. “This means that on the basis of the first syllable the brain had made a prediction on what could be the word that the people were hearing. When the prediction was disregarded, the signal MMN appeared” says Yamil Vidal, lead author of the study. The same signal also appeared when the third syllable changed. In this case, the MMN signal was bigger because, as the first two syllables were right, the surprise for the failure of the prediction was bigger. “This is very interesting” explains Vidal “because it tells us that the prediction is maintained over time, even far from the most immediate past”.

### **Capture the meaning quickly**

“The perception of what we listen to is a difficult task, because it requires a fast understanding of the meaning of an auditory signal which is actually very complex” says Vidal “The formulation of predictions could be an efficient solution to reach an accurate and fast understanding”. Considering that the words the volunteers listened to were totally unknown “in these experiments we can see that our auditory system has a formidable ability to learn sequences of phonemes which make up new words and make predictions with these words, though, as in this case, there is no linguistic, semantic or syntax information to come to aid”. When we learn a new language, this is probably what allows us to recognize and understand new words, recently learned. “We started this research working with speech, but more generally, this ability to make predictions could be put into action in any other auditory experience, from music to any environmental sound. This is an extremely interesting issue we will investigate more deeply with further research”.

# SISSA

Scuola  
Internazionale  
Superiore di  
Studi Avanzati

---

**IMAGE**

Credits: Gerd Altmann on Pixabay

**PAPER:**

<https://bit.ly/2B1sP87>

**SISSA**

Scuola Internazionale  
Superiore di Studi Avanzati  
Via Bonomea 265, Trieste  
**W** [www.sissa.it](http://www.sissa.it)

**Facebook, Twitter**  
@SISSAschool

**CONTATTI****Nico Pitrelli**

→ [pitrelli@sissa.it](mailto:pitrelli@sissa.it)  
**T** +39 040 3787462  
**M** +39 339 1337950

Donato Ramani  
→ [ramani@sissa.it](mailto:ramani@sissa.it)  
**T** +39 040 3787513  
**M** +39 342 8022237

Alessandro Tavecchio  
→ [atevecch@sissa.it](mailto:atevecch@sissa.it)  
**M** +39 334 1468 174